



## 23 Peasholm Crescent

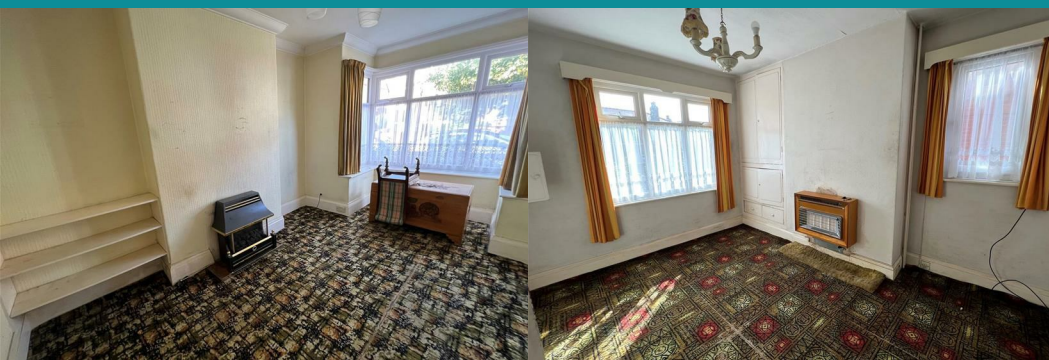
Peasholm, Scarborough, YO12 7QY

**Guide Price £243,000**



We are thrilled to bring to the market this 3 BEDROOM DETACHED PROPERTY, close to all the fantastic North Bay amenities, from the beautiful beach, picturesque Peasholm Park, Scarboroughs Open Air Theatre, many popular cafes and eateries and yet still conveniently close to the Town Centre .

With 3 bedrooms, bathroom and a loft, the property has 2 reception rooms and kitchen downstairs. There is a gated driveway leading to garage at the side of the property and rear and front gardens. In our opinion, this property offers the buyer fantastic potential to make a truly amazing home. We highly recommend an early viewing. **SOLD WITH NO ONWARD CHAIN**





### Front Entrance 7'7" x 2'6" (2.31m x 0.76m)

The property is accessed via a UPVC front door with stained glass details. This leads into a small porch with further original stained glass detailing in the door and a window looking into the hall.

### Hallway 11'9" x 7'7" (3.58m x 2.31m)

The second door leads into a hallway with doors leading into the sitting room, dining room and kitchen and stairs leading up to the first floor landing. There are good sized cupboards under the stairs.

### Sitting Room 11'9" x 10'8" (3.58m x 3.25m)

At the front of the house with a large UPVC double glazed box bay window the lounge has a radiator and fireplace, deep skirting boards and original wooden door.

### Dining Room 12'9" x 9'3" (3.89m x 2.82m)

At the rear of the property the dining room has two UPVC double glazed windows one looking over the rear garden and a small window to the side. There are also cupboards built into an alcove at the side of the chimney breast.

### Kitchen 9'7" x 7'5" / 7'5" x 4'1" (2.92m x 2.26m / 2.26m x 1.24m)

The kitchen is at the rear of the house and has two UPVC double glazed windows. There is a stainless steel single sink and drainer and a range of cupboards and shelves, there is a radiator and also spaces for appliances including plumbing for a washing machine. The kitchen extends into an L shape at the rear and has a serving hatch into the dining room.

### Bedroom 1 12'9" x 9'6" (3.89m x 2.90m)

At the front of the house with a large UPVC box bay window this double bedroom has a radiator, hand wash basin, deeper skirting boards and original wooden door.

### Bedroom 2 11'9" x 10'8" (3.58m x 3.25m)

At the rear of the house this double bedroom also has a hand wash basin and two UPVC double glazed windows, deep skirting boards, original wooden door and a built in cupboard in the alcove next to the chimney breast.

### Bedroom 3 7'7" x 7'2" (2.31m x 2.18m)

This single bedroom has a UPVC double glazed window to the front, a radiator, deep skirting boards and an original wooden door.

### Bathroom 7'6" x 5'2" (2.29m x 1.57m)

A family bathroom with fully tiled walls, with a separate shower unit, bath, handwash basin and a double glazed UPVC window with a radiator and original wooden door.

### W.C. 4'7" x 2'6" (1.40m x 0.76m)

A separate W.C. from the bathroom with a UPVC double glazed window to the side of the house.

### Loft Room

A loft room with two velux windows accessed by a pull down ladder.

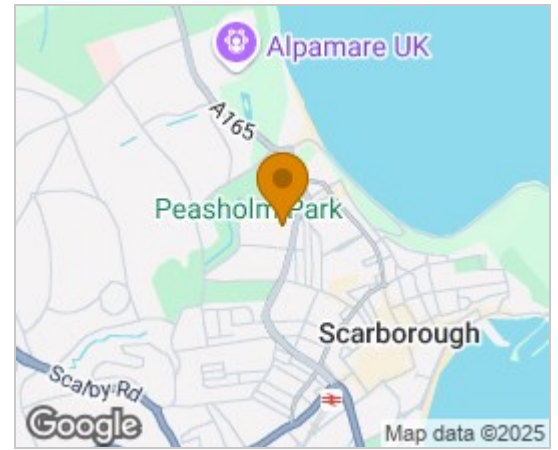
### Outside

To the front of the house there are double gates leading onto a concrete driveway with a forecourt garden mostly laid to flowerbeds which are well stocked. The rear of the property can be accessed via a gated walkway to the right and higher wooden gates on the drive for privacy. There is a small patio area and a lawn in the back garden and some flower beds. Outhouse with WC

### Garage 8'6" x 15'8" (2.5

The garage is a single ar double glazed window to

## Area Map

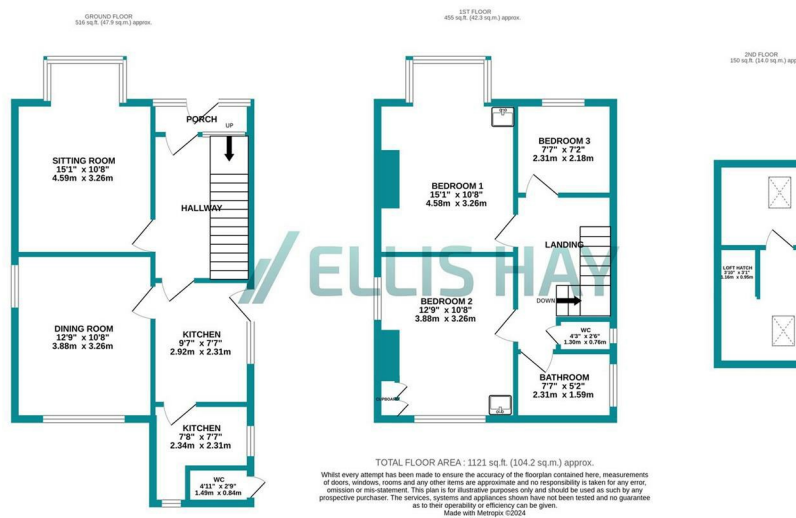


### Energy Efficiency Rating

	Current	Potential
Very energy efficient - lower running costs		
(92 plus) <b>A</b>		
(81-91) <b>B</b>		
(69-80) <b>C</b>		77
(55-68) <b>D</b>	48	
(39-54) <b>E</b>		
(21-38) <b>F</b>		
(1-20) <b>G</b>		
Not energy efficient - higher running costs		
<b>England &amp; Wales</b>	EU Directive 2002/91/EC	

## Council Tax Band: D

## Tenure: Freehold



Ellis Hay for themselves, for any joint agents and for the vendors or lessors of this property whose agents they are, give notice that {all the particulars are set out as a general outline only for the guidance of intending purchasers or lessees, and do not constitute, nor constitute part of, an offer or contract; (ii) all descriptions, dimensions, references to condition and necessary permissions for use and occupation, and other details are given in good faith and are believed to be correct but any Intending purchasers or tenants should not rely on them as statements or representations of fact but must satisfy themselves by inspection or otherwise as to the correctness of each of them; (iii) no person in the employment of Ellis Hay, has any authority to make or give any representation or warranty whatever in relation to this property